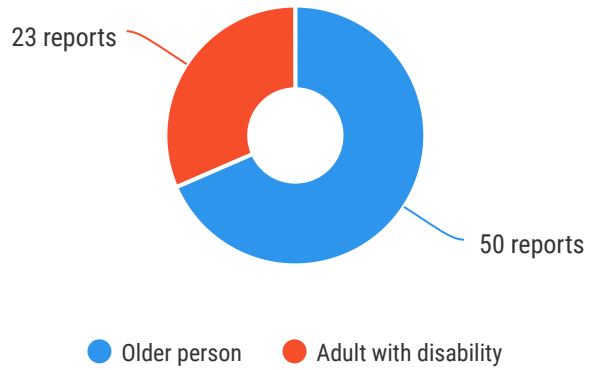




The Ageing & Disability Commission (ADC) received 73 reports related to allegations or concerns of abuse, neglect or exploitation of an older person or adult with disability from **Wollongong** in 2020*.

68%

of reports received in this LGA related to an older person.*



Of reports relating to **adults with disability***

57%

were male



Of reports relating to **older people***

62%

were female



69%

of reports about **adults with disability** were made by a **paid worker**[^]



26%

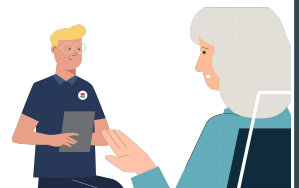
of reports about **older people** came from a **paid worker**[^]

26%

of reports came from the **child** of the older person

14%

from a friend of the adult



2

reports came from adults who identified as **Aboriginal** or **Torres Strait Islander**~



6

reports involved an adult who spoke a language other than English at home with **Macedonian*** the most common language reported

今日は!



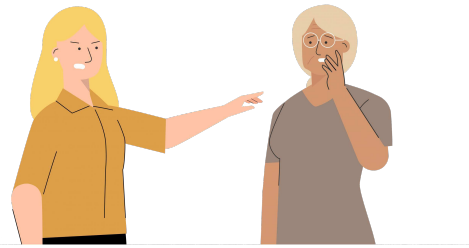
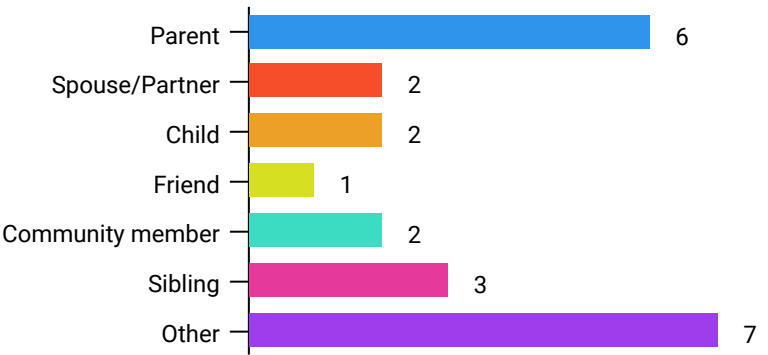
* Information taken from the Ageing & Disability Commission data collected between 1 January - 31 December 2020 where the location of the adult identified in the report was known.

[^]A paid worker is defined as a formal paid support, for example an NDIS support worker or CHSP support worker.

~ Adults who identify as Aboriginal or Torres Strait Islander and who are 50 years of age and over.

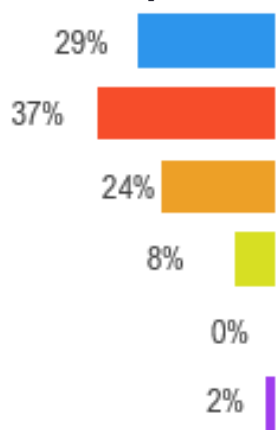
Reports about adults with disability **most commonly involved a relative or parent*** as the subject of allegation.

78% of reports about older people involved family members, **mainly adult children** followed by a friend of the adult,* as the subject of allegation.

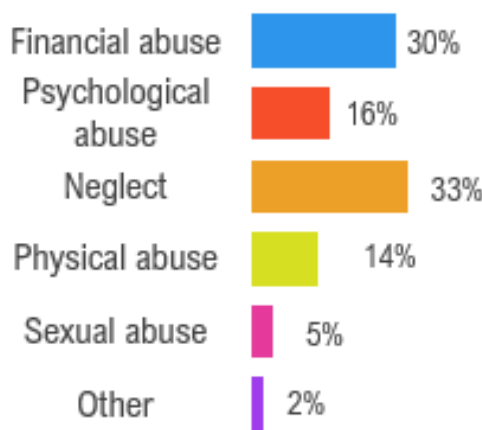


The most commonly reported types of abuse towards older people were **verbal abuse, failure to meet support needs** and **financial exploitation**.

Older persons



Adults with disability



The most commonly reported types of abuse towards adults with disability were **verbal abuse, withholding person's money** and **failure to meet support needs**.

What else do we know about the Wollongong community?

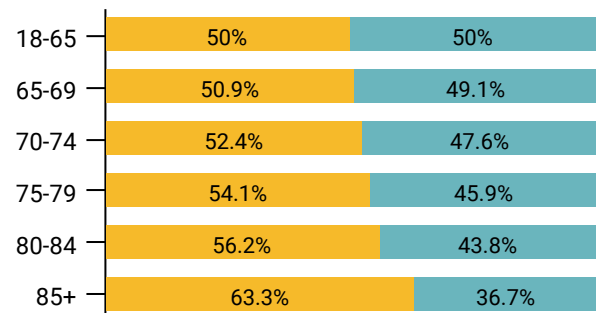
17%

of the population are over the age of 65¹



There are more women than men over the age of 85¹

● Female ● Male



50% of all households are

family households **35%** are single person households and **14%** are group households²

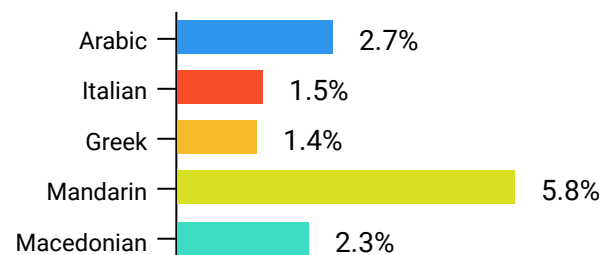


27.9%

of households speak a language other than English²



The most common language spoken at home is **Mandarin**²



¹ The ADC classifies abuse into 5 broad categories, with a list of signs to indicate the type of alleged abuse reported.

² 2016 Population data by LGA

² 2016 Census QuickStats, where group household refers to unrelated flatmate or co-tenancy arrangements