

Western NSW

Bathurst, Blayney, Bogan, Brewarrina, Cabonne, Cowra, Forbes, Lachlan, Mid-West Regional, Narromine, Oberon, Orange, Parkes, Walgett, Warren, Warrumbungle Shire & Weddin

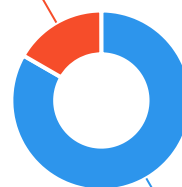


The Ageing & Disability Commission (ADC) received 84 reports related to allegations or concerns of abuse, neglect or exploitation of an older person or adult with disability in **Western NSW** (excluding Dubbo) in 2020*.

83%

of reports received in this region related to an older person.*

14 reports



70 reports

● Older person ● Adult with disability

Of reports related to **adults with disability***

64%

were female



Of reports related to **older people***

52%

were female



71%

of reports about **adults with disability** were made by a **paid worker[^]**



28%

of reports about **older people** came from a **paid worker[^]**

27%

of reports came from the **adult child** of the older person

8%

from a friend of the adult



15

reports came from adults who identified as **Aboriginal or Torres Strait Islander~**



2

reports involved adults who spoke a language other than English at home

今日は!

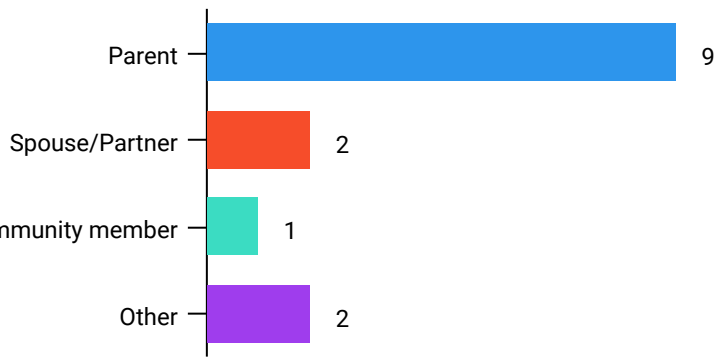


* Information taken from the Ageing & Disability Commission data collected between 1 January - 31 December 2020 where the location of the adult identified in the report was known.

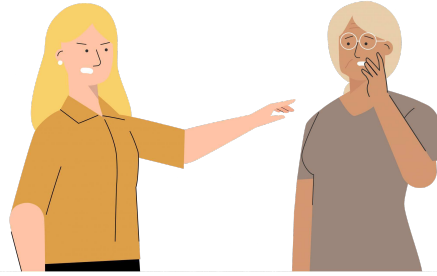
[^]A paid worker is defined as a formal paid support, for example an NDIS support worker or CHSP support worker.

~ Adults who identify as Aboriginal or Torres Strait Islander and who are 50 years of age and over.

Reports about adults with disability most **commonly involved the parent or caregiver*** as the subject of allegation.

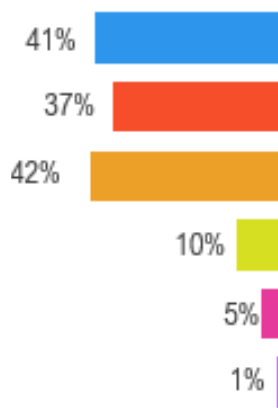


80% of reports about older people involved family members, **mainly adult children***, followed by a spouse/partner as the subject of allegation.

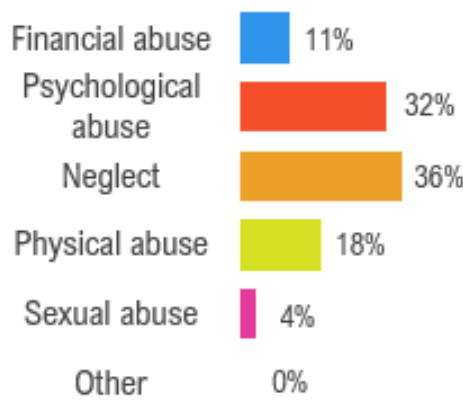


The most commonly reported types of abuse towards older people were **verbal abuse**, **failure to meet support needs** and **financial exploitation**.

Older persons



Adults with disability



The most commonly reported types of abuse towards adults with disability were **failure to meet support needs**, **verbal abuse** and **physical abuse (hitting, kicking or punching the adult)**.

What else do we know about Western NSW?

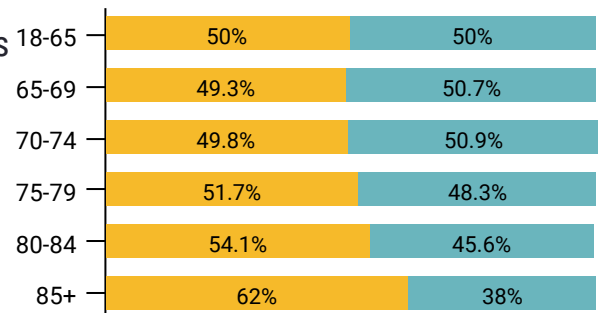
19%

of the population are over the age of 65.



The age splits across men and women are relatively even, with more women than men aged 85+

● Female ● Male



68% of all households are

family households **28%** are single person households and **3%** are group households₂



4.9%

of households speak a language other than English₂



10.5%

of the Western Sydney population identify as Aboriginal or Torres Strait Islander₃

¹ The ADC classifies abuse into 5 broad categories, with a list of signs to indicate the type of alleged abuse reported.

² 2016 [Population data by LGA](#)

³ 2016 [Census QuickStats](#), where group household refers to unrelated flatmate or co-tenancy arrangements

⁴ 2016 Census via the Western NSW Primary Health Network