



52*
reports

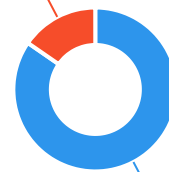


The Ageing & Disability Commission (ADC) received 52 reports related to allegations or concerns of abuse, neglect or exploitation of an older person or adult with disability from Tweed in 2020*.

84%

of reports received in this LGA related to an older person.*

8 reports



44 reports

● Older person ● Adult with disability

Of reports relating to adults with disability*

50%

were female



Of reports relating to older people*

61%

were female



62%

of reports about adults with disability were made by a paid worker^



25%

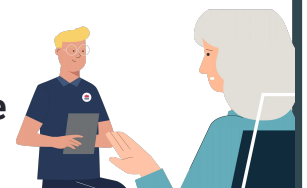
of reports came from the adult child of the older person

18%

from the adult experiencing abuse themselves

15%

of reports about older people came from a neighbour^



0

reports came from adults who identified as **Aboriginal** or **Torres Strait Islander**~



0

reports involved an adult who spoke a language other than English at home*

今日は!



* Information taken from the Ageing & Disability Commission data collected between 1 January - 31 December 2020 where the location of the adult identified in the report was known.

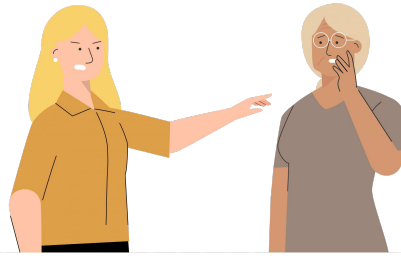
^A paid worker is defined as a formal paid support, for example an NDIS support worker or CHSP support worker.

~ Adults who identify as Aboriginal or Torres Strait Islander and who are 50 years of age and over.

Reports about adults with disability **most commonly involved immediate family members*** as the subject of allegations.

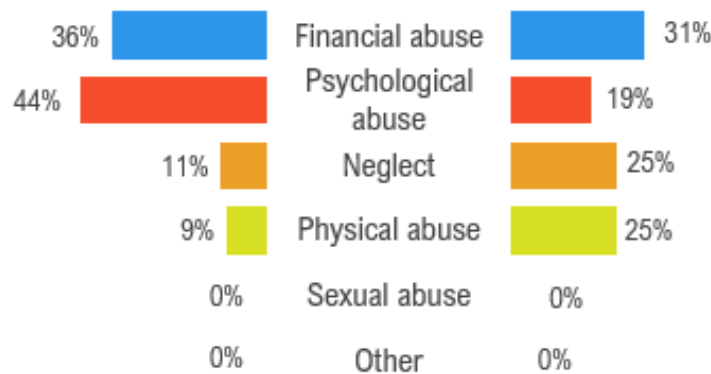


81% of reports about older people involved family members, **mainly adult children** followed by the adults spouse or partner,* as the subject of allegation.



Older persons

The most commonly reported types of abuse towards older people were **verbal abuse**, **other financial abuse** and **financial exploitation**.



The most commonly reported types of abuse towards adults with disability were **restricting access to family/others**, **theft (taking person's money)** and **failure to meet support needs**.

What else do we know about the Tweed community?

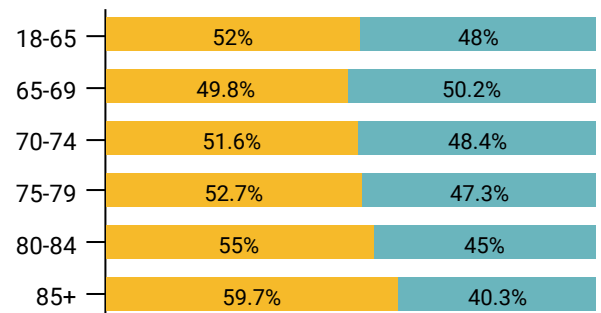
24%

of the population are over the age of 65₁



There are more women than men over the age of 85₁

● Female ● Male



67% of all households are

family households **28%** are single person households and **3%** are group households₂



5%

of households speak a language other than English₂



¹ The ADC classifies abuse into 5 broad categories, with a list of signs to indicate the type of alleged abuse reported.

¹ 2016 Population data by LGA data

² 2016 Census QuickStats, where group household refers to unrelated flatmate or co-tenancy arrangements