

Port Macquarie-Hastings



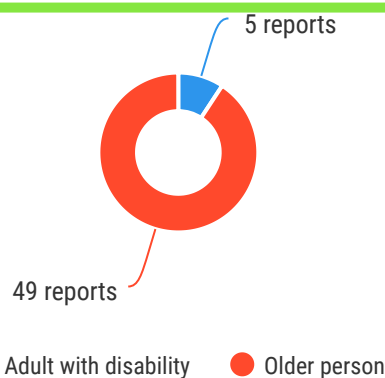
54*
reports



The Ageing & Disability Commission (ADC) received 54 reports related to allegations or concerns of abuse, neglect or exploitation of an older person or adult with disability from **Port Macquarie-Hastings** in 2020*.

90%

of reports received in this LGA related to an older person.*



Of reports relating to **adults with disability***

80%

were female



Of reports relating to **older people***

51%

were female



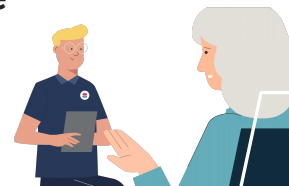
60% of reports about **adults with disability** were made by a **paid worker**[^]



32% of reports came from the adult **child** of the older person

24% of reports about **older people** came from a **paid worker**[^]

18% from the adult experiencing abuse themselves



0

reports came from adults who identified as **Aboriginal** or **Torres Strait Islander**~



1

report involved an adult who spoke a language other than English at home*

今日は!

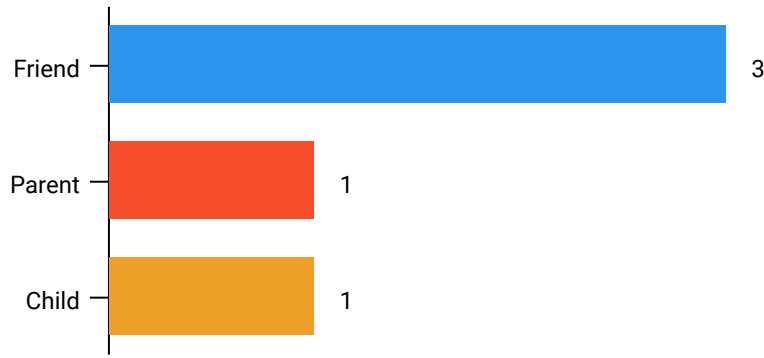


* Information taken from the Ageing & Disability Commission data collected between 1 January - 31 December 2020 where the location of the adult identified in the report was known.

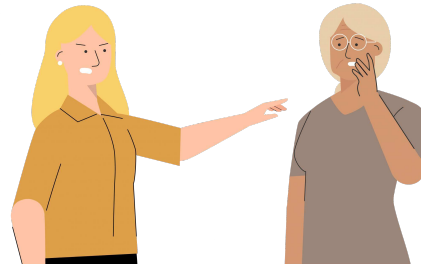
[^]A paid worker is defined as a formal paid support, for example an NDIS support worker or CHSP support worker.

~ Adults who identify as Aboriginal or Torres Strait Islander and who are 50 years of age and over.

Reports about adults with disability **most commonly involved friends*** as the subject of allegation.

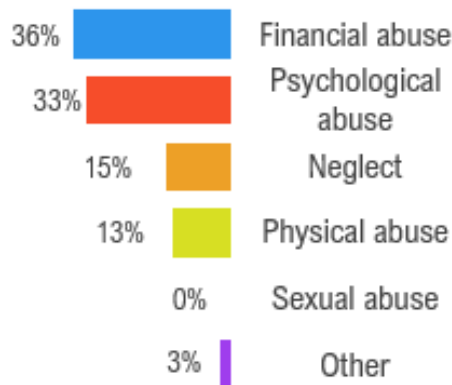


73% of reports about older people involved family members, **mainly adult children** followed by the adults spouse or partner,* as the subject of allegation.



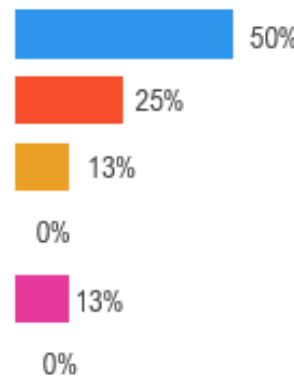
Older persons

The most commonly reported types of abuse towards older people were **verbal abuse, restricting access to family/others** and **financial exploitation.***



Adults with disability

The most commonly reported types of abuse towards adults with disability were **withholding person's money** and **verbal abuse.***



What else do we know about the Port Macquarie-Hastings community?

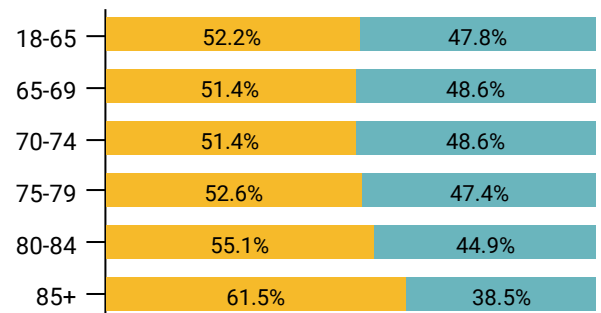
26%

of the population are over the age of 65.



There are more women than men over the age of 85.

● Female ● Male



68% of all households are

family households **28%** are single person households and **3%** are group households²



4.5%

of households speak a language other than English²



¹ The ADC classifies abuse into 5 broad categories, with a list of signs to indicate the type of alleged abuse reported.

¹ 2016 Population data by LGA data

² 2016 Census QuickStats, where group household refers to unrelated flatmate or co-tenancy arrangements