

Parramatta

36*
reports

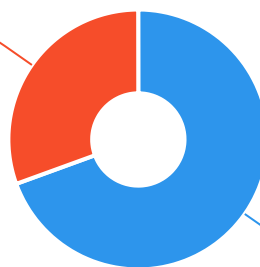


The Ageing & Disability Commission (ADC) received 36 reports related to allegations or concerns of abuse, neglect or exploitation of an older person or adult with disability from Parramatta in 2020*.

69%

of reports received in this LGA related to an older person.*

11 reports



25 reports

● Older person ● Adult with disability

Of reports relating to adults with disability*

55%

were female



Of reports relating to older people*

60%

were female



54%

of reports about adults with disability were made by a paid worker[^], followed by the adult themselves



32%

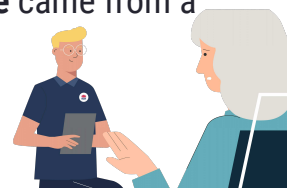
of reports came from the adult child of the older person

24%

of reports about older people came from a paid worker[^]

20%

from the adult experiencing abuse themselves



1

report came from an adult who identified as Aboriginal~



3

reports involved an adult who spoke a language other than English at home, including Chinese, Greek and Cantonese

今日は!



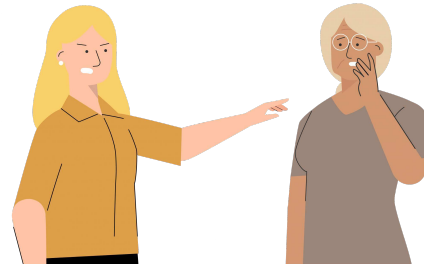
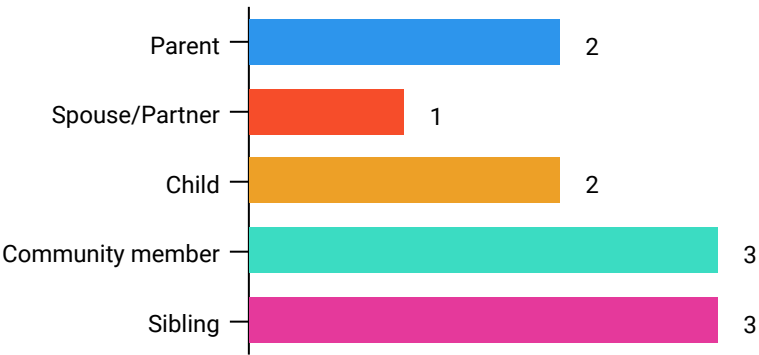
* Information taken from the Ageing & Disability Commission data collected between 1 January - 31 December 2020 where the location of the adult identified in the report was known.

[^]A paid worker is defined as a formal paid support, for example an NDIS support worker or CHSP support worker.

~ Adults who identify as Aboriginal or Torres Strait Islander and who are 50 years of age and over.

Reports about adults with disability most **commonly involved siblings or a member of the community*** as the subject of allegation.

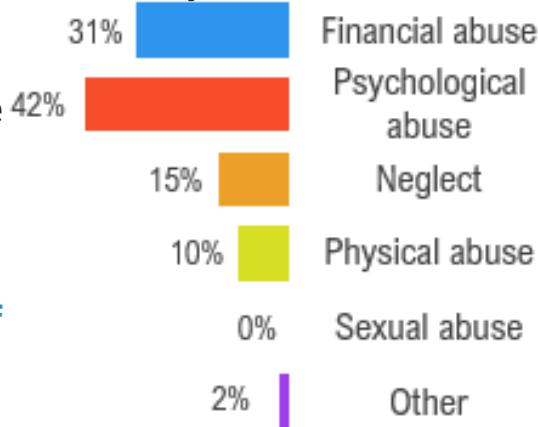
84% of reports about older people involved family members, **mainly adult children***, followed by the spouse/partner as the subject of allegation.



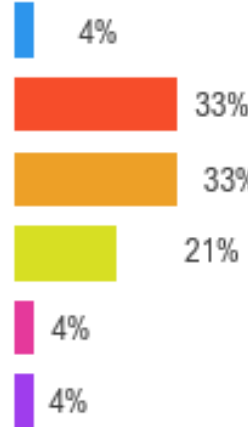
Older persons

Adults with disability

The most commonly reported types of abuse towards older people were **verbal abuse**, **failure to meet medical needs** and **misuse of power of attorney**.



The most commonly reported types of abuse towards adults with disability were **failure to meet support needs**, **verbal abuse** and **hitting or punching**.



What else do we know about the Parramatta community?

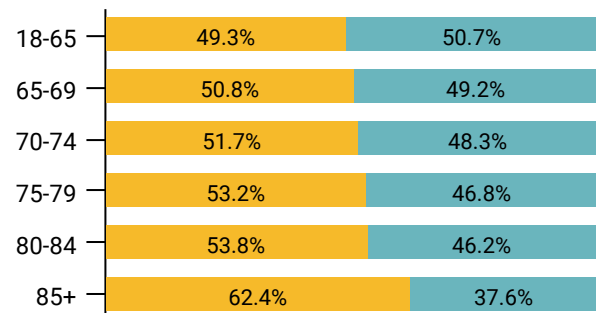
11%

of the population are over the age of 65.



There are more women than men over the age of 85.

● Female ● Male



75% of all households are

family households **20%** are single person households and **4%** are group households²

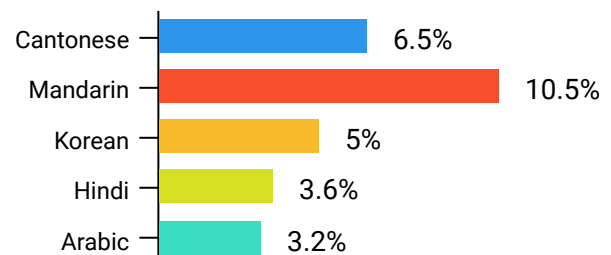


54%

of households speak a language other than English²



The most common language spoken at home is **Mandarin**²



¹ The ADC classifies abuse into 5 broad categories, with a list of signs to indicate the type of alleged abuse reported.

² 2016 Population data by LGA

³ 2016 Census QuickStats, where group household refers to unrelated flatmate or co-tenancy arrangements