

# Northern Sydney

Hunters Hill, Ku-ring-gai, Lane Cove, Mosman, North Sydney, Willoughby & The Hills Shire

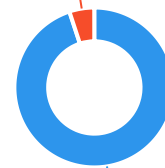


The Ageing & Disability Commission (ADC) received 99 reports related to allegations or concerns of abuse, neglect or exploitation of an older person or adult with disability in **Northern Sydney** (excluding Ryde and the Northern Beaches) in 2020\*.

## 94%

of reports received in this region related to an older person.\*

5 reports



94 reports

● Older person ● Adult with disability

Of reports related to **adults with disability\***

## 100%

were female



Of reports related to **older people\***

## 69%

were female



## 80%

of reports about **adults with disability** were made by a **paid worker**<sup>^</sup>



## 38%

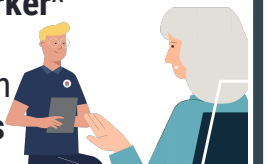
of reports about older people came from the **adult child**

## 23%

of reports came from a **paid worker**<sup>^</sup>

## 18%

of reports came from the person **experiencing abuse themselves**



## 1

report came from an adult who identified as **Aboriginal or Torres Strait Islander**~



## 5

report involved an adult who spoke a language other than English at home, with **Polish** the most commonly reported language

今日は!



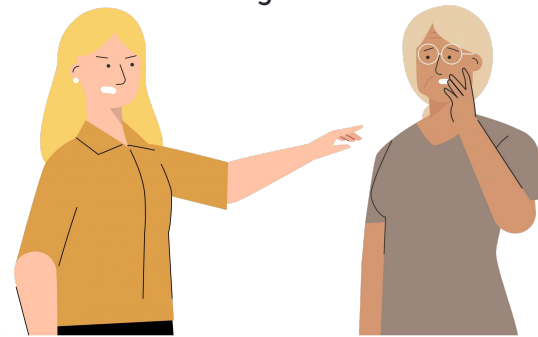
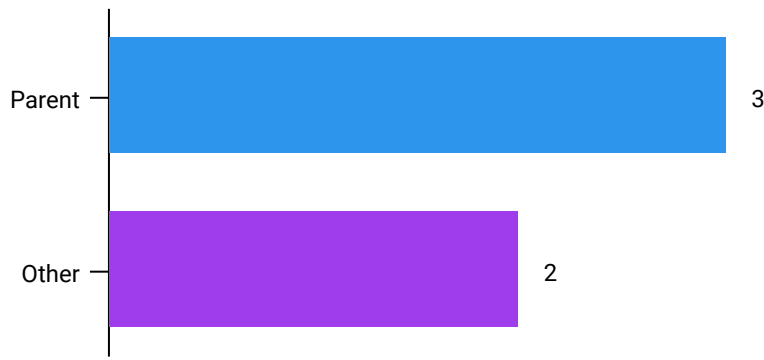
\* Information taken from the Ageing & Disability Commission data collected between 1 January - 31 December 2020 where the location of the adult identified in the report was known.

<sup>^</sup>A paid worker is defined as a formal paid support, for example an NDIS support worker or CHSP support worker.

~ Adults who identify as Aboriginal or Torres Strait Islander and who are 50 years of age and over.

Reports about adults with disability most **commonly involved the parent\*** as the subject of allegation.

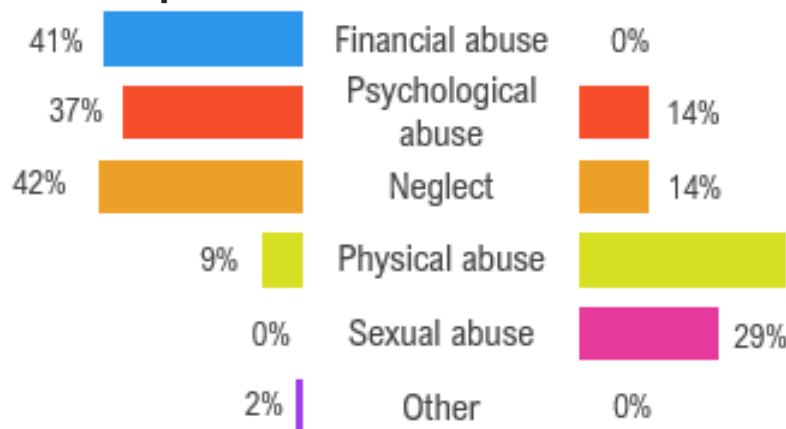
**75%** of reports about older people involved family members, **mainly adult children\***, as the subject of allegation.



### Older persons

### Adults with disability

The most commonly reported types of abuse towards older people were **verbal abuse**, **failure to meet support needs** and **financial exploitation**.



The most commonly reported types of abuse towards adults with disability were **sexual assault** and **physical abuse (hitting, kicking or punching the adult)**.

## What else do we know about Northern Sydney?

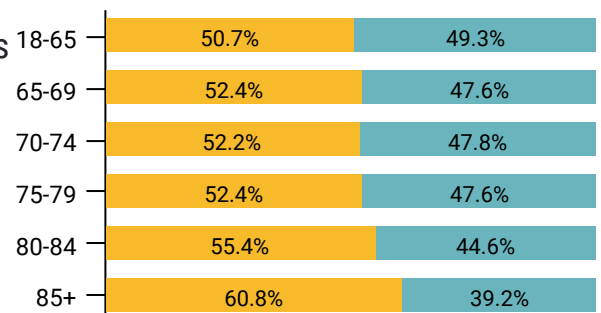
**15%**

of the population are over the age of 65.



The age splits across men and women are relatively even, with more women than men aged 85+.

● Female ● Male



**67%** of all households are

family households **27%** are single person households and **5%** are group households<sup>2</sup>

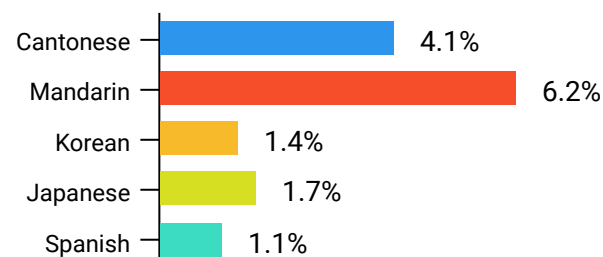


**32.1%**

of households speak a language other than English<sup>2</sup>



The most common language spoken at home is **Mandarin**<sup>2</sup>



<sup>1</sup> The ADC classifies abuse into 5 broad categories, with a list of signs to indicate the type of alleged abuse reported.

<sup>2</sup> 2016 [Population data by LGA](#)

<sup>3</sup> 2016 [Census QuickStats](#), where group household refers to unrelated flatmate or co-tenancy arrangements