

Northern NSW

Ballina, Byron, Clarence Valley, Kyogle, Lismore, Richmond Valley

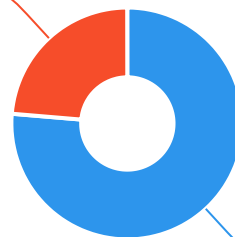


The Ageing & Disability Commission (ADC) received 93 reports related to allegations or concerns of abuse, neglect or exploitation of an older person or adult with disability in **Northern NSW** (excluding Tweed) in 2020*.

76%

of reports received in this region related to an older person.*

22 reports



71 reports

● Older person ● Adult with disability

Of reports related to **adults with disability***

77%

were female



Of reports related to **older people***

77%

were female



77%

of reports about **adults with disability** were made by a **paid worker**[^]



26%

of reports about **older people** came from a **paid worker**[^]

16%

of reports came from the **adult child** of the older person

19%

of reports came from the person **experiencing abuse themselves**



2

reports came from adults who identified as **Aboriginal or Torres Strait Islander**~



1

report involved an adult who spoke a language other than English at home

今日は!



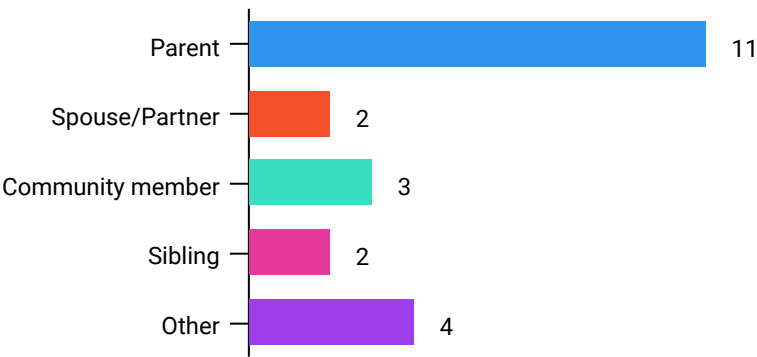
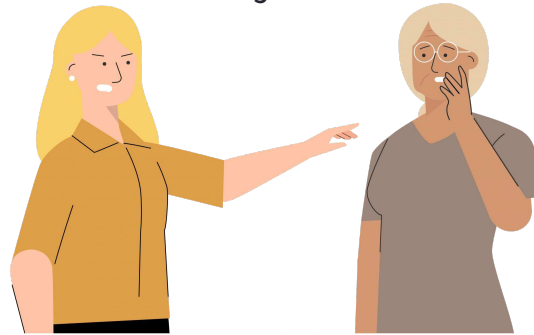
* Information taken from the Ageing & Disability Commission data collected between 1 January - 31 December 2020 where the location of the adult identified in the report was known.

[^]A paid worker is defined as a formal paid support, for example an NDIS support worker or CHSP support worker.

~ Adults who identify as Aboriginal or Torres Strait Islander and who are 50 years of age and over.

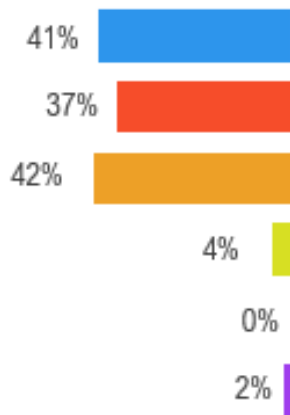
Reports about adults with disability most **commonly involved the parent*** as the subject of allegation.

85% of reports about older people involved family members, **mainly adult children**, as the subject of allegation*.



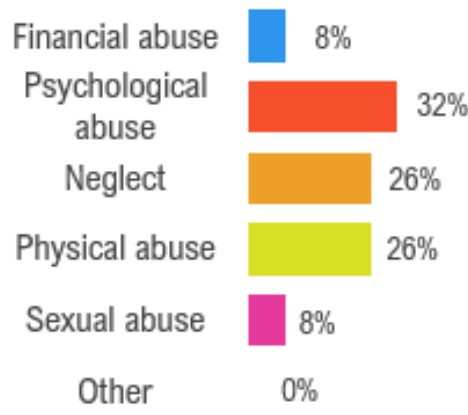
Older persons

The most commonly reported types of abuse towards older people were **verbal abuse**, **failure to meet support needs** and **financial exploitation**.



Adults with disability

The most commonly reported types of abuse towards adults with disability were **failure to meet support needs**, **verbal abuse** and **physical abuse (hitting, kicking or punching the adult)**.



What else do we know about Northern NSW?

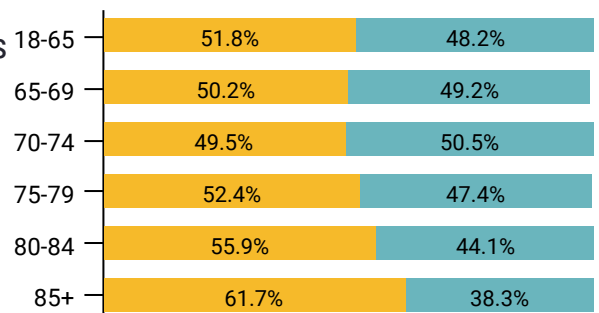
23%

of the population are over the age of 65.



The age splits across men and women are relatively even, with more women than men aged 85+

● Female ● Male



66% of all households are

family households **28%** are single person households and **5%** are group households²



6.9%

of households speak a language other than English²



¹ The ADC classifies abuse into 5 broad categories, with a list of signs to indicate the type of alleged abuse reported.

² 2016 [Population data by LGA](#)

³ 2016 [Census QuickStats](#), where group household refers to unrelated flatmate or co-tenancy arrangements