

# New England

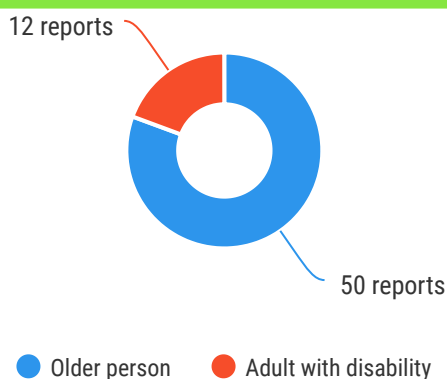
Armidale, Glen Innes Severn, Gunnedah, Gwydir, Inverell, Liverpool Plains, Moree Plains, Muswellbrook, Narrabri, Tenterfield, Upper Hunter Shire, Uralla & Walcha



The Ageing & Disability Commission (ADC) received 62 reports related to allegations or concerns of abuse, neglect or exploitation of an older person or adult with disability across the **New England region** (excluding Tamworth) in 2020\*.

## 80%

of reports received in this region related to an older person.\*



Of reports related to **adults with disability**\*

## 58%

were female



Of reports related to **older people**\*

## 60%

were female



## 50%

 of reports about **adults with disability** were made by a **paid worker**<sup>^</sup>

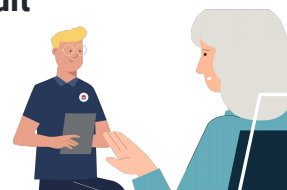
## 42%

 of reports about **older people** came from a **paid worker**<sup>^</sup>

## 22%

 of reports came from the **adult child** of the older person

## 10%

 from the adult experiencing abuse themselves

## 5

reports came from adults who identified as **Aboriginal or Torres Strait Islander**~



## 2

reports involved adults who spoke a language other than English at home

今日は!

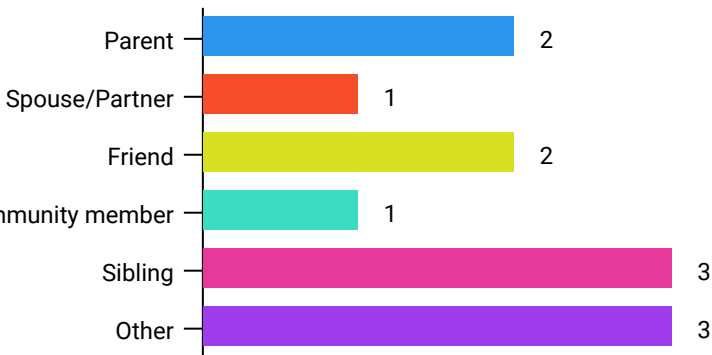


\* Information taken from the Ageing & Disability Commission data collected between 1 January - 31 December 2020 where the location of the adult identified in the report was known.

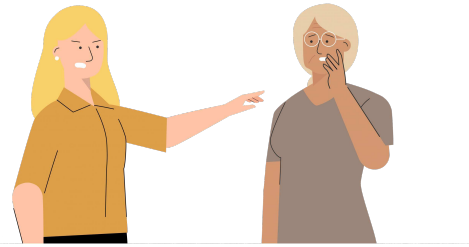
<sup>^</sup>A paid worker is defined as a formal paid support, for example an NDIS support worker or CHSP support worker.

~ Adults who identify as Aboriginal or Torres Strait Islander and who are 50 years of age and over.

Reports about adults with disability most **commonly involved the sibling\*** as the subject of allegation.

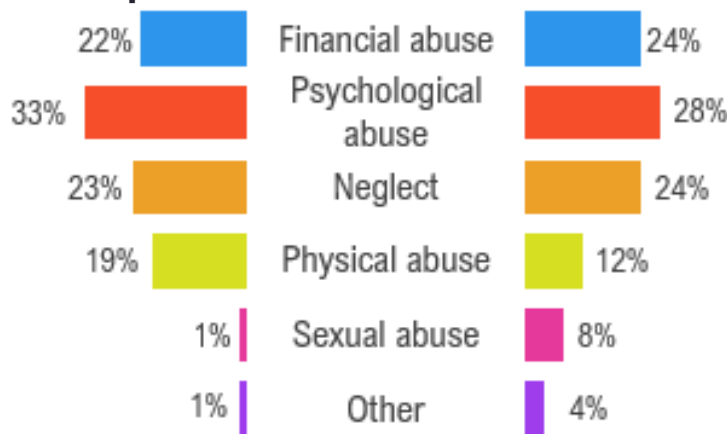


**66%** of reports about older people involved family members, **mainly adult children\***, as the subject of allegation.



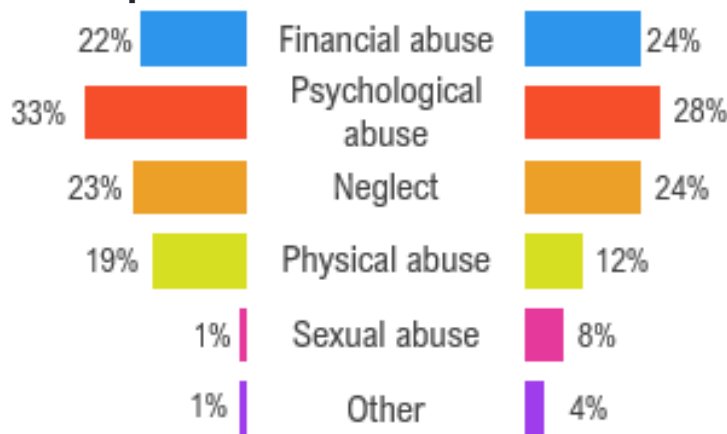
The most commonly reported type of abuse towards older people were **verbal abuse**, **failure to meet support needs/medical care** and **financial exploitation**<sup>1</sup>

### Older persons



### Adults with disability

The most commonly reported type of abuse towards adults with disability were **financial abuse**, **restricting access to support services** and **failure to meet support needs**<sup>1</sup>



## What else do we know about the New England region?

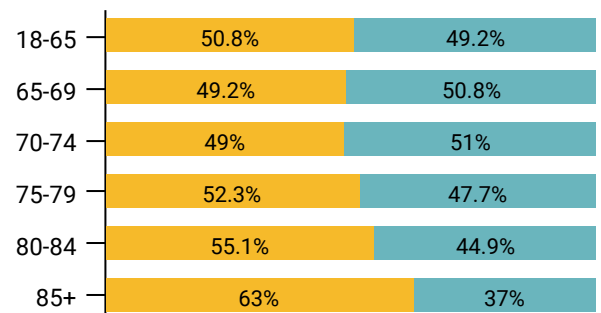
**19%**

of the population are over the age of 65<sup>1</sup>



There are more women than men over the age of 85, but younger age groups are evenly spread

● Female ● Male



**67%** of all households are

family households **28%** are single person households and **3%** are group households<sup>2</sup>



**4.7%**

of households speak a language other than English<sup>2</sup>



<sup>1</sup> The ADC classifies abuse into 5 broad categories, with a list of signs to indicate the type of alleged abuse reported.

<sup>2</sup> 2016 Population data by LGA

<sup>2</sup> 2016 Census QuickStats, where group household refers to unrelated flatmate or co-tenancy arrangements