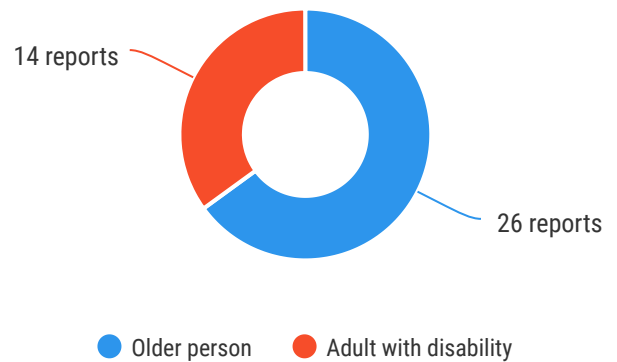




The Ageing & Disability Commission (ADC) received 40 reports related to allegations or concerns of abuse, neglect or exploitation of an older person or adult with disability from the **Georges River** in 2020\*.

**65%**

of reports received in this LGA related to an older person.\*



Of reports relating to **adults with disability**\*

**42%**

were female



Of reports relating to **older people**\*

**76%**

were female



**33%**

of reports about **adults with disability** were made by a **paid worker**<sup>^</sup>



**38%**

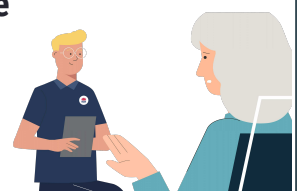
of reports came from the **adult child** of the older person

**26%**

of reports about **older people** came from a **paid worker**<sup>^</sup>

**11%**

from the **grandchild** of the older person



**0**

reports came from adults who identified as **Aboriginal** or **Torres Strait Islander**~



**8**

reports involved an adult who spoke a language other than English at home with **Arabic** and **Italian**\* the most common languages reported

今日は!

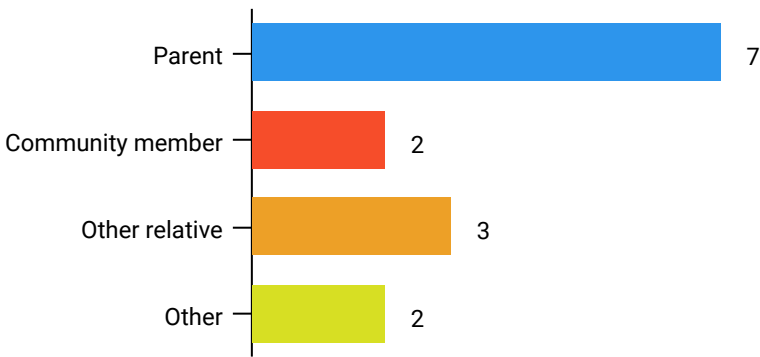


\* Information taken from the Ageing & Disability Commission data collected between 1 January - 31 December 2020 where the location of the adult identified in the report was known.

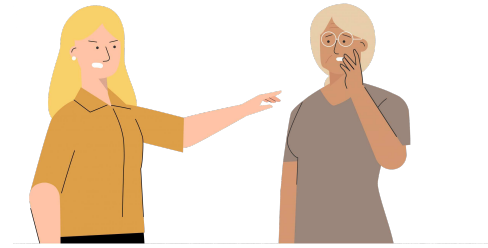
<sup>^</sup>A paid worker is defined as a formal paid support, for example an NDIS support worker or CHSP support worker.

~ Adults who identify as Aboriginal or Torres Strait Islander and who are 50 years of age and over.

Reports about adults with disability **most commonly involved parents\*** as the subject of allegation.

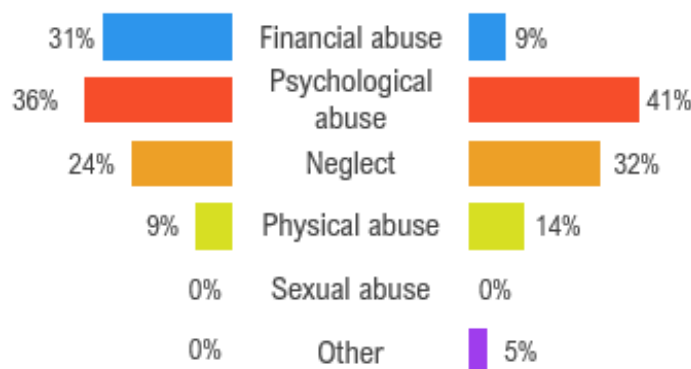


**76%** of reports about older people involved family members, **mainly adult children** followed by spouse/partners,\* as the subject of allegation.



### Older persons

The most commonly reported types of abuse towards older people were **financial exploitation, restricting access to family/others** and **failure to meet support needs**.



The most commonly reported types of abuse towards adults with disability were **verbal abuse, other psychological abuse** and **failure to meet support needs**.

## What else do we know about the Georges River community?

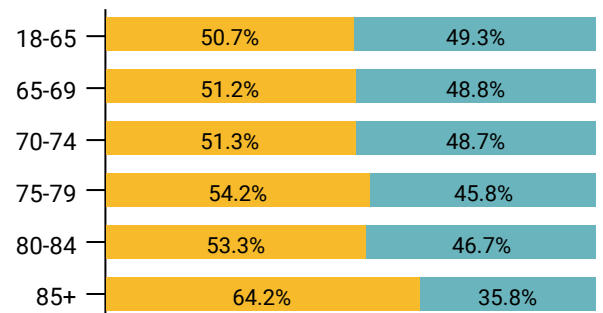
**14%**

of the population are over the age of 65<sup>1</sup>



There are more women than men over the age of 85<sup>1</sup>

● Female ● Male



**76%** of all households are

family households **19%** are single person households and **4%** are group households<sup>2</sup>

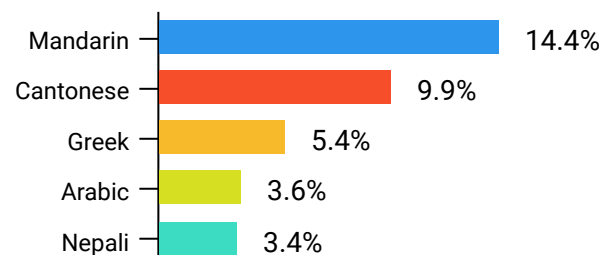


**14%**

of households speak a language other than English<sup>2</sup>



The most common language spoken at home is **Mandarin**<sup>2</sup>



<sup>1</sup> The ADC classifies abuse into 5 broad categories, with a list of signs to indicate the type of alleged abuse reported.

<sup>2</sup> 2016 [Population data by LGA data](#)

<sup>2</sup> 2016 [Census QuickStats](#), where group household refers to unrelated flatmate or co-tenancy arrangements