

# Wollongong

255\*  
reports

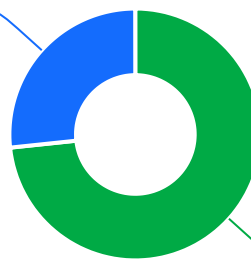


The Ageing & Disability Commission (ADC) received 255 reports of alleged abuse, neglect or exploitation of an older person or adult with disability from Wollongong in 2020-2022\*.

73%

of reports received in this LGA related to an older person\*

68 reports



187 reports

● Older person ● Adult with disability

Of reports relating to adults with disability\*

40%

were female



Of reports relating to older people\*

64%

were female



72% of reports about adults with disability were made by a paid worker^



40% of reports about older people came from a paid worker^

26% of reports came from the child of the older person

8% of reports came from the older person experiencing abuse



14

reports were about an adult who identified as **Aboriginal** or **Torres Strait Islander**~



42

reports involved an adult who spoke a language other than English at home with **Greek** and **Macedonian**\* the most common languages reported

今日は!

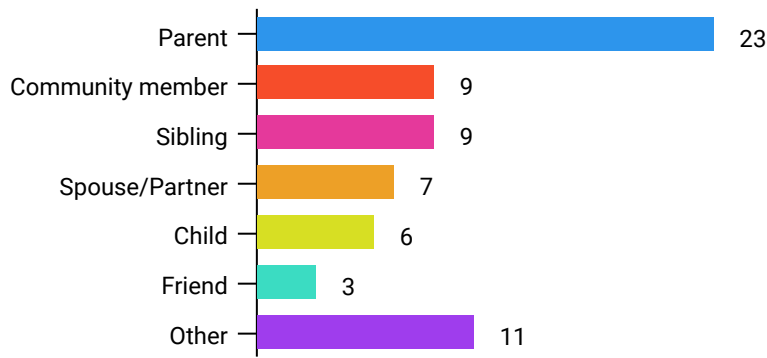


\* Information taken from the Ageing & Disability Commission data on reports received between 1 January 2020 - 31 December 2022 where the location of the adult identified in the report was known.

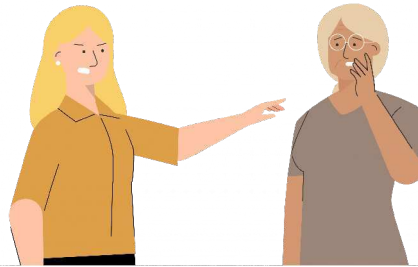
^A paid worker is defined as a formal paid support worker, for example an NDIS support worker or CHSP provider.

~ People who identify as Aboriginal or Torres Strait Islander and who are over 18 with disability, or an older person 50+

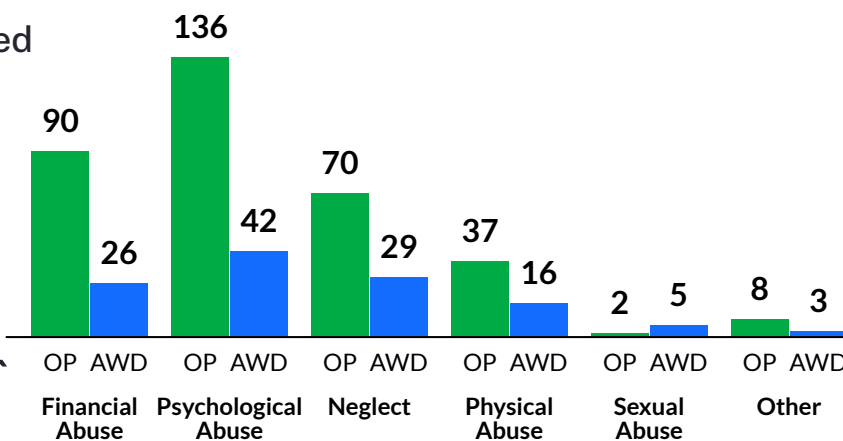
Reports about adults with disability most commonly involved a parent\* as the subject of allegation



**78%** of reports about older people involved family members, mainly adult children,\* as the subject of allegation



The most commonly reported types of abuse towards older people (OP) were verbal abuse, failure to meet support needs and restricting access to family\*\*



The most commonly reported types of abuse towards adults with disability (AWD) were failure to meet support needs, verbal abuse and restricting access to supports or services\*\*

## What else do we know about the Wollongong community?

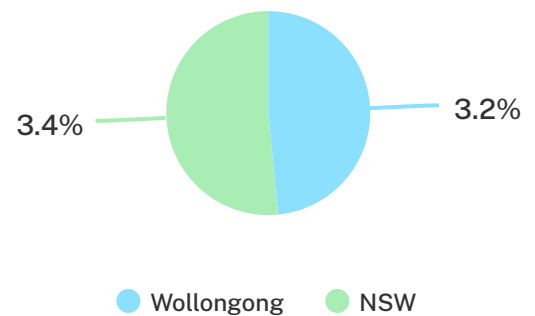
**19%**

of the population are over the age of 65<sub>1</sub>



**3.2%**

of the population identified as Aboriginal or Torres Strait Islander (ATSI)<sub>1</sub>



**69%** of all households are family households  
**26%** are single person households and **5%** are group households<sub>2</sub>

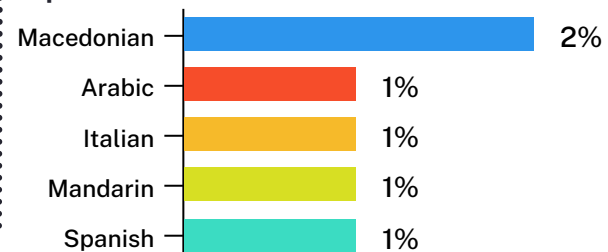


**19%**

of households speak a language other than English<sub>2</sub>



**Macedonian** is the most common language other than English spoken at home<sub>2</sub>



<sup>1</sup> The ADC classifies abuse into 5 broad categories, with a list of signs to indicate the type of alleged abuse reported.

<sup>2</sup> 2021 Census data by LGA (QuickStats)

<sup>2</sup> 2021 Census QuickStats, where group household refers to unrelated flatmate or co-tenancy arrangements.