

# Western NSW

Bathurst, Blayney, Bogan, Brewarrina, Cabonne, Cowra, Dubbo, Forbes, Lachlan, Mid-West Regional, Narromine, Oberon, Orange, Parkes, Walgett, Warren, Warrumbungle Shire & Weddin

336\*  
reports

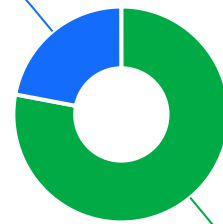


The Ageing & Disability Commission (ADC) received 336 reports of alleged abuse, neglect or exploitation of an older person or adult with disability across Western NSW in 2020-2022\*.

78%

of reports received in this region related to an older person.\*

74 reports



262 reports

● Older person ● Adult with disability

Of reports related to adults with disability\*

65%

were female



Of reports related to older people\*

55%

were female



73%

of reports about adults with disability were made by a paid worker<sup>^</sup>



37%

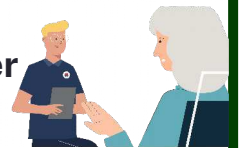
of reports about older people came from a paid worker<sup>^</sup>

26%

of reports came from the adult child of the older person

8%

of reports came from the older person experiencing abuse



36

reports were about an adult who identified as Aboriginal or Torres Strait Islander~



5

reports involved an adult who spoke a language other than English at home with Croatian\* the most common languages reported

今日は!

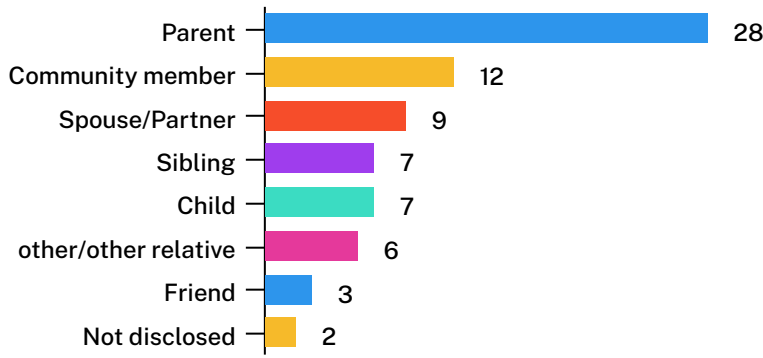


\* Information taken from the Ageing & Disability Commission data on reports received between 1 January 2020 - 31 December 2022 where the location of the adult identified in the report was known.

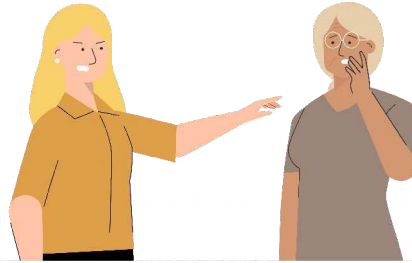
<sup>^</sup>A paid worker is defined as a formal paid support worker, for example an NDIS support worker or CHSP provider.

~ People who identify as Aboriginal or Torres Strait Islander and who are over 18 with disability, or an older person 50+

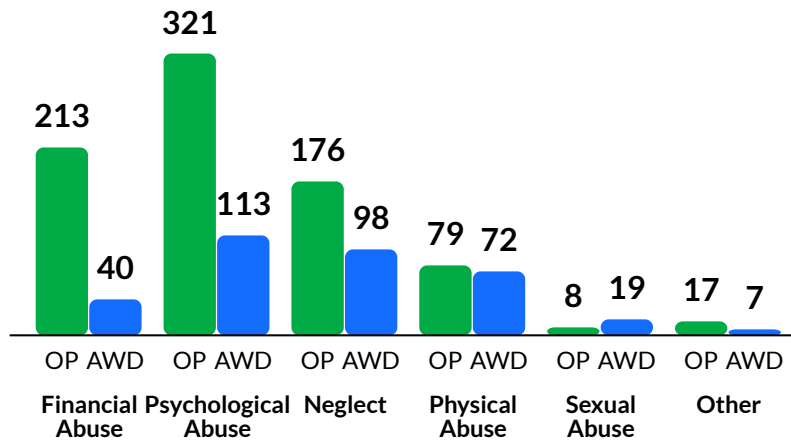
Reports about the abuse of adults with disability most commonly involved a parent\* as the subject of allegation



**59%** of reports about older people involved family members, mainly adult children followed by a paid worker,\* as the subject of allegation



The most commonly reported types of abuse towards older people (OP) were verbal abuse, failure to meet support needs and financial exploitation.\*`



The most commonly reported types of abuse towards adults with disability (AWD) were failure to meet support needs, verbal abuse and restricting access to supports/services.\*`

## What else do we know about Western NSW?

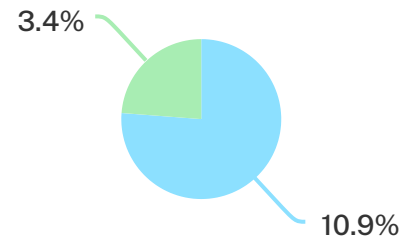
**20%**

of the population are over the age of 65.



**10.9%**

of the population identified as Aboriginal or Torres Strait Islander (ATSI)<sup>1</sup>



**67%**

of all households are family households 30% are single person households and 3% are group households<sup>2</sup>

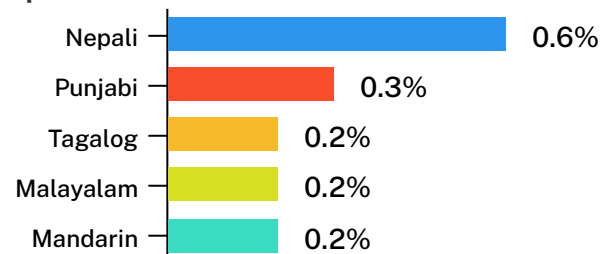


**6%**

of households speak a language other than English<sup>2</sup>



Nepali is one of the most common languages other than English spoken at home<sup>2</sup>



<sup>1</sup> The ADC classifies abuse into 5 broad categories, with a list of signs to indicate the type of alleged abuse reported.

<sup>2</sup> 2021 Census data by LGA (QuickStats).

<sup>2</sup> 2021 Census QuickStats, where group household refers to unrelated flatmate or co-tenancy arrangements.