

South Eastern Sydney

Bayside, Georges River, Randwick, Sutherland Shire and Woollahra

534*
reports

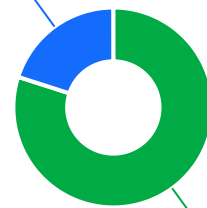


The Ageing & Disability Commission (ADC) received **534** reports of alleged abuse, neglect or exploitation of an older person or adult with disability across **South Eastern Sydney** in 2020-2022*.

80%

of reports received in this region related to an older person*

107 reports



427 reports

● Older person ● Adult with disability

Of reports related to adults with disability*

50%

were male



Of reports related to older people*

62%

were female



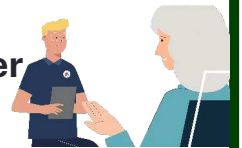
52% of reports about adults with disability were made by a paid worker^



28% of reports about older people came from a paid worker^

22% of reports came from the adult child of the older person

15% of reports came from the older person experiencing abuse



8

reports were about an adult who identified as **Aboriginal or Torres Strait Islander**~



66

reports involved an adult who spoke a language other than English at home, with **Greek and Portuguese*** the most commonly reported language

今日は!

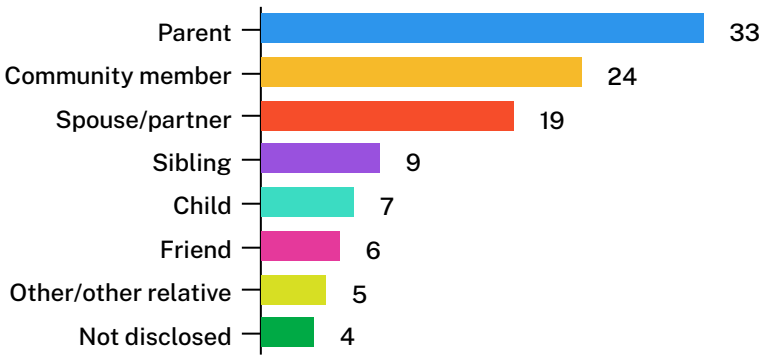


* Information taken from the Ageing & Disability Commission data on reports received between 1 January 2020 - 31 December 2022 where the location of the adult identified in the report was known.

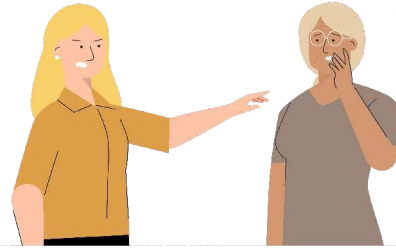
^A paid worker is defined as a formal paid support worker, for example an NDIS support worker or CHSP provider.

~ People who identify as Aboriginal or Torres Strait Islander and who are over 18 with disability, or an older person 50+

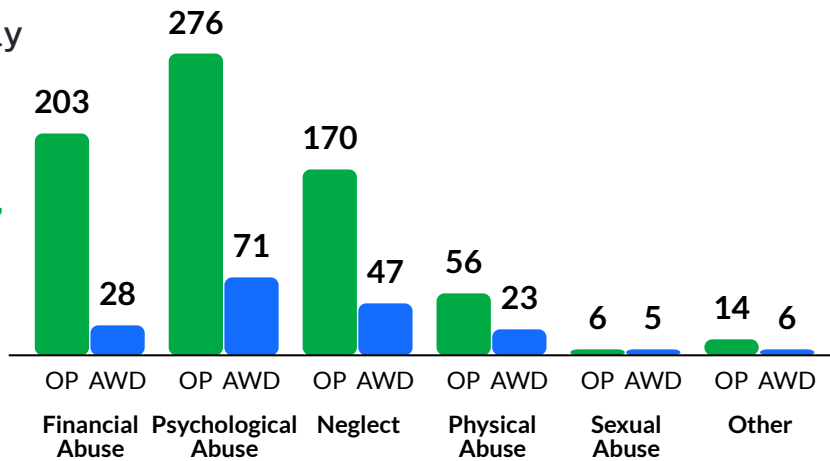
Reports about the abuse of adults with disability **most commonly involved a parent*** as the subject of allegation



58% of reports about older people involved family members, **mainly adult children** followed by a paid worker,* as the subject of allegation



The most commonly reported types of abuse towards older people (OP) were **verbal abuse, failure to meet support needs and financial exploitation***



The most commonly reported types of abuse towards adults with disability (AWD) were **failure to meet support needs, verbal abuse and restricting access to supports/services***

What else do we know about the South Eastern Sydney region?

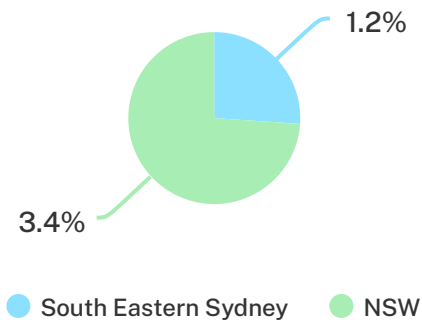
11%

of the population are over the age of 65.



1.2%

of the population identified as Aboriginal or Torres Strait Islander (ATSI).



53%

of all households are family households **37%** are single person households and **11%** are group households²

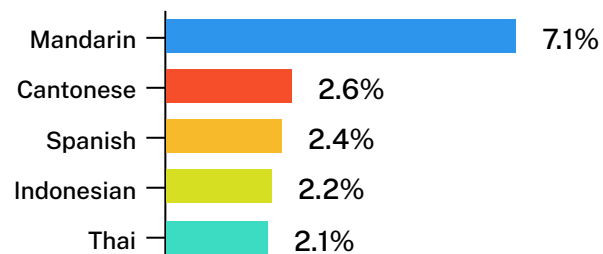


40%

of households speak a language other than English²



Mandarin is the most common language other than English²



¹ The ADC classifies abuse into 5 broad categories, with a list of signs to indicate the type of alleged abuse reported. [1 2021 Census data by LGA \(QuickStats\)](#)
² 2021 Census QuickStats, where group household refers to unrelated flatmate or co-tenancy arrangements.