

# New England

Armidale, Glen Innes Severn, Gunnedah, Gwydir, Inverell, Liverpool Plains, Moree Plains, Muswellbrook, Narrabri, Tamworth, Tenterfield, Upper Hunter Shire, Uralla & Walcha

302\*  
reports

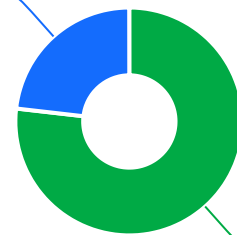


The Ageing & Disability Commission (ADC) received 302 reports of alleged abuse, neglect or exploitation of an older person or adult with disability across New England in 2020 - 2022\*.

77%

of reports received in this region related to an older person.\*

70 reports



232 reports

● Older person ● Adult with disability

Of reports related to adults with disability\*

56%  
were male

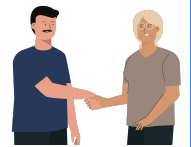


Of reports related to older people\*

68%  
were female



54% of reports about adults with disability were made by a paid worker^



35% of reports about older people came from a paid worker^

19% of reports came from the adult child of the older person

14% of reports came from the older person experiencing abuse



18

reports were about an adult who identified as Aboriginal or Torres Strait Islander~



4

reports involved adults who spoke a language other than English at home

今日は!

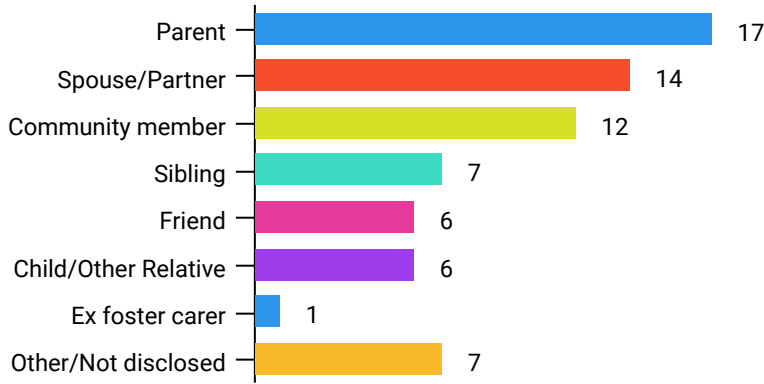


\* Information taken from the Ageing & Disability Commission data on reports received between 1 January 2020 - 31 December 2022 where the location of the adult identified in the report was known.

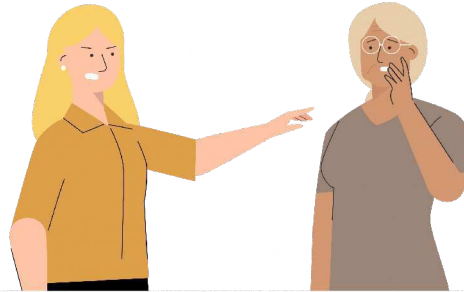
^A paid worker is defined as a formal paid support worker, for example an NDIS support worker or CHSP provider.

~ People who identify as Aboriginal or Torres Strait Islander and who are over 18 with disability, or an older person 50+

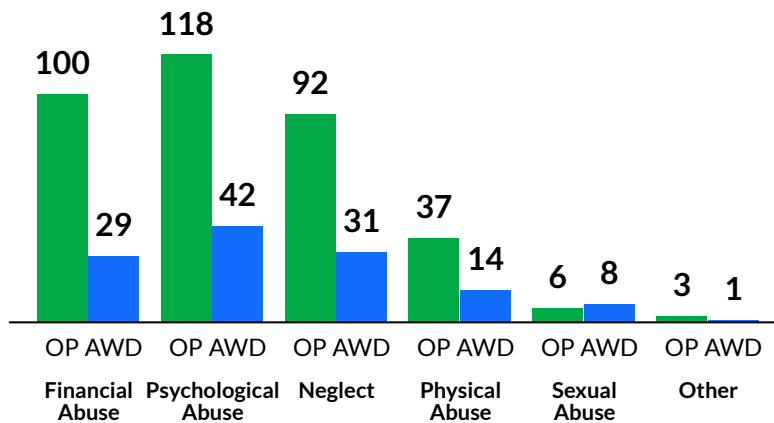
Reports about adults with disability most commonly involved a parent\* as the subject of allegation



**55%** of reports about older people involved family members, mainly adult children,\* as the subject of allegation



The most commonly reported type of abuse towards older people (OP) were failure to meet support needs, verbal abuse, and financial exploitation\*\*



The most commonly reported type of abuse towards adults with disability (AWD) were failure to meet support needs, 'other' psychological abuse and verbal abuse.\*\*

## What else do we know about the New England region?

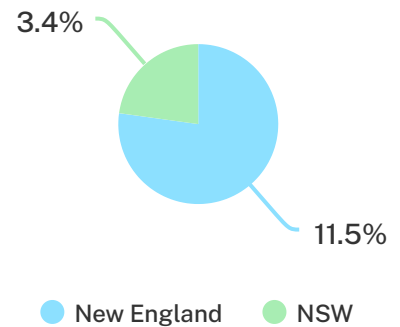
**22%**

of the population are over the age of 65<sub>1</sub>



**11.5%**

of the population identified as Aboriginal or Torres Strait Islander (ATSI)<sub>1</sub>



**67%**

of all households are family households 30% are single person households and 3% are group households<sub>2</sub>

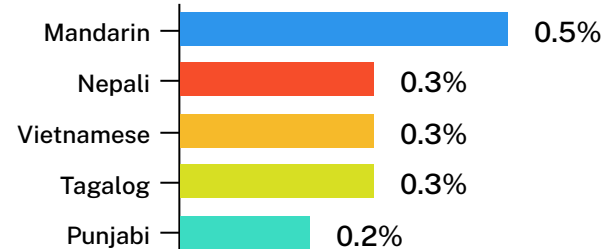


**6%**

of households speak a language other than English<sub>2</sub>



Mandarin is the most common language other than English spoken at home<sub>2</sub>



<sup>1</sup> The ADC classifies abuse into 5 broad categories, with a list of signs to indicate the type of alleged abuse reported.

<sup>1</sup> 2021 Census data by LGA (QuickStats)

<sup>2</sup> 2021 Census QuickStats, where group household refers to unrelated flatmate or co-tenancy arrangements