

# Nepean Blue Mountains

Blue Mountains, Hawkesbury, Lithgow & Penrith

382\*  
reports

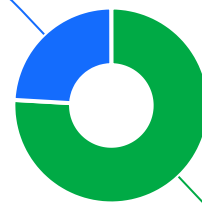


The Ageing & Disability Commission (ADC) received 382 reports of alleged abuse, neglect or exploitation of an older person or adult with disability across the Nepean Blue Mountains in 2020-2022\*.

76%

of reports received in this region related to an older person.\*

92 reports



290 reports

● Older person ● Adult with disability

Of reports related to adults with disability\*



62%

were female

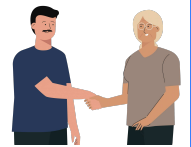
Of reports related to older people\*



66%

were female

62% of reports about adults with disability were made by a paid worker<sup>^</sup>



29% of reports about older people came from the adult child of the older person

28% of reports came from a paid worker<sup>^</sup>

19% of reports came from the older person experiencing abuse



9

reports were about an adult who identified as Aboriginal or Torres Strait Islander~



21

reports involved an adult who spoke a language other than English at home, with Mandarin the most common language spoken

今日は!

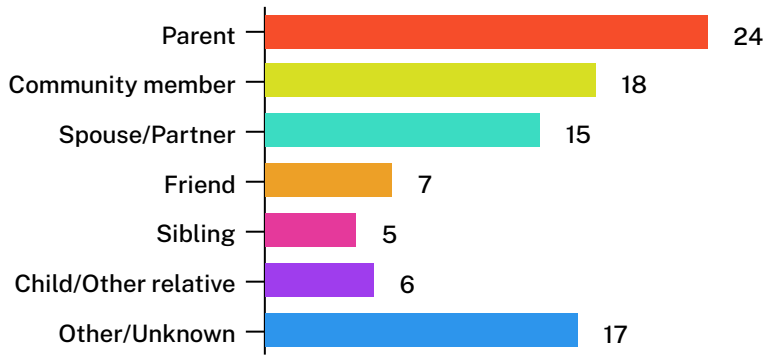


\* Information taken from the Ageing & Disability Commission data on reports received between 1 January 2020 - 31 December 2022 where the location of the adult identified in the report was known.

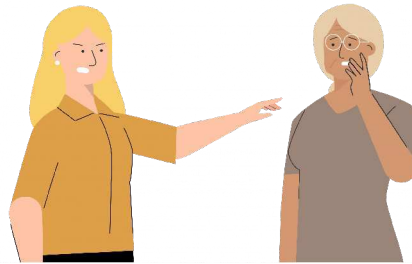
<sup>^</sup>A paid worker is defined as a formal paid support worker, for example an NDIS support worker or CHSP provider.

~ People who identify as Aboriginal or Torres Strait Islander and who are over 18 with disability, or an older person 50+

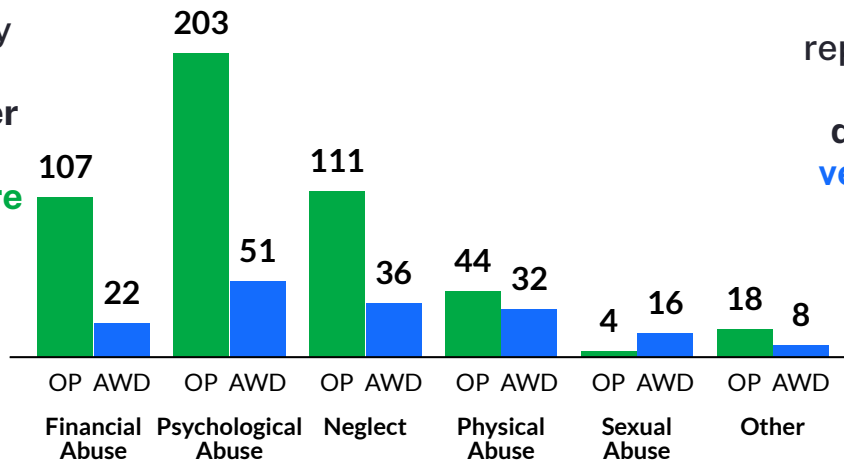
Reports about adults with disability most commonly involved a parent\* as the subject of allegation



**59%** of reports about older people involved family members, mainly adult children,\* as the subject of allegation



The most commonly reported type of abuse towards older people (OP) was verbal abuse, failure to meet support needs and financial exploitation\*`



The most commonly reported type of abuse towards adults with disability (AWD) was verbal abuse, neglect of medical care, failure to meet support needs, and hitting, kicking or punching\*`

## What else do we know about the Nepean Blue Mountains region?

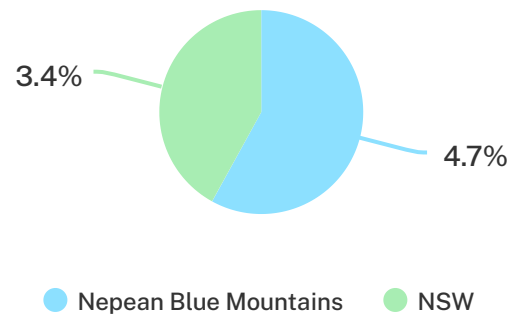
**20%**

of the population are over the age of 65<sub>1</sub>



**4.7%**

of the population identified as Aboriginal or Torres Strait Islander (ATSI)<sub>1</sub>



**73%** of all households

are family households  
**25%** are single person households and  
**2%** are group households<sub>2</sub>

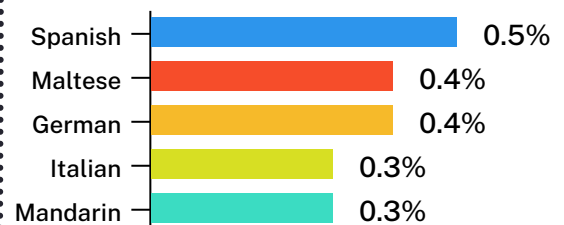


**10%**

of households speak a language other than English<sub>2</sub>



**Spanish** is the most common language other than English<sub>2</sub>



` The ADC classifies abuse into 5 broad categories, with a list of signs to indicate the type of alleged abuse reported.

<sub>1</sub> 2021 Census data by LGA (QuickStats).

<sub>2</sub> 2021 Census QuickStats, where group household refers to unrelated flatmate or co-tenancy arrangements.