

Illawarra Shoalhaven

Kiama, Shellharbour, Shoalhaven and Wollongong

565*
reports

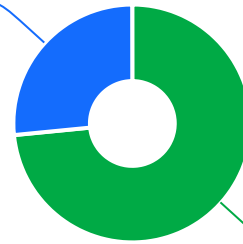


The Ageing & Disability Commission (ADC) received 565 reports of alleged abuse, neglect or exploitation of an older person or adult with disability across the Illawarra Shoalhaven in 2020 - 2022*.

73%

of reports received in this region related to an older person.*

150 reports



415 reports

● Older person ● Adult with disability

Of reports related to adults with disability*

54%

were male



Of reports related to older people*

66%

were female



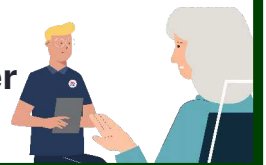
65% of reports about adults with disability were made by a paid worker[^]



34% of reports about older people came from a paid worker[^]

28% of reports came from the adult child of the older person

8% of reports came from the older person experiencing abuse



19

reports were about an adult who identified as Aboriginal or Torres Strait Islander~



51

reports involved adults who spoke a language other than English at home with Greek being the most commonly reported language

今日は!

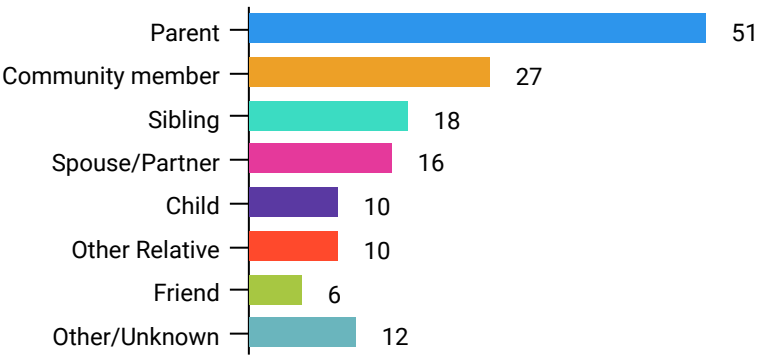


* Information taken from the Ageing & Disability Commission data on reports received between 1 January 2020 - 31 December 2022 where the location of the adult identified in the report was known.

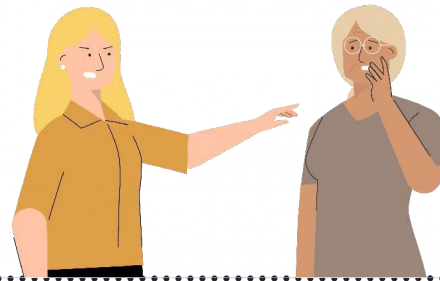
[^]A paid worker is defined as a formal paid support worker, for example an NDIS support worker or CHSP provider.

~ People who identify as Aboriginal or Torres Strait Islander and who are over 18 with disability, or an older person 50+

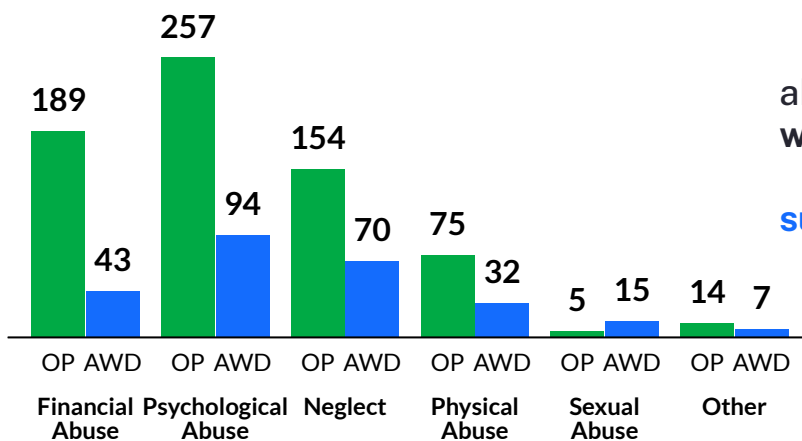
Reports about adults with disability most commonly involved a parent* as the subject of allegation.



70% of reports about older people involved family members, mainly adult children,* as the subject of allegation.



The most commonly reported type of abuse towards older people (OP) was verbal abuse, failure to meet support needs and financial exploitation*`



The most commonly reported type of abuse towards adults with disability (AWD) was failure to meet support needs, verbal abuse and 'other' forms of psychological abuse.*`

What else do we know about the Illawarra Shoalhaven region?

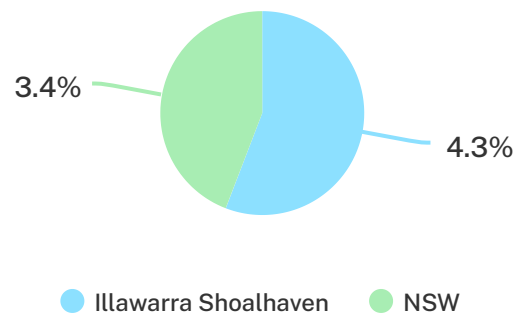
29%

of the population are over the age of 65₁



4.3%

of the population identified as Aboriginal or Torres Strait Islander (ATSI)₁



69%

of all households are family households 28% are single person households and 3% are group households₂

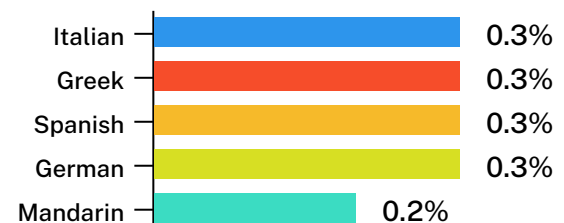


6%

of households speak a language other than English₂



Italian and Greek are among the most common languages spoken other than English₂



` The ADC classifies abuse into 5 broad categories, with a list of signs to indicate the type of alleged abuse reported.

₁ 2021 Census data by LGA (QuickStats).

₂ 2021 Census QuickStats, where group household refers to unrelated flatmate or co-tenancy arrangements.