

# Bathurst

68\*  
reports

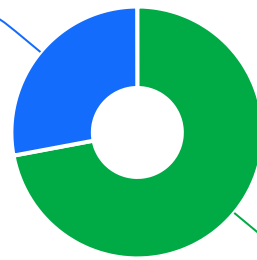


The Ageing & Disability Commission (ADC) received 68 reports of alleged abuse, neglect or exploitation of an older person or adult with disability from Bathurst in 2020 - 2022\*.

72%

of reports received in this LGA related to an older person\*

19 reports



49 reports

● Older person ● Adult with disability

Of reports relating to adults with disability\*

58%

were female



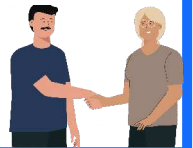
Of reports relating to older people\*

53%

were female



79% of reports about adults with disability were made by a paid worker^



31%

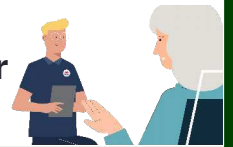
of reports about older people came from a paid worker^

22%

of reports came from the child of the older person

12%

of reports came from the older person experiencing abuse



4

reports were about an adult who identified as Aboriginal or Torres Strait Islander~



2

reports involved an adult who spoke a language other than English at home

今日は!

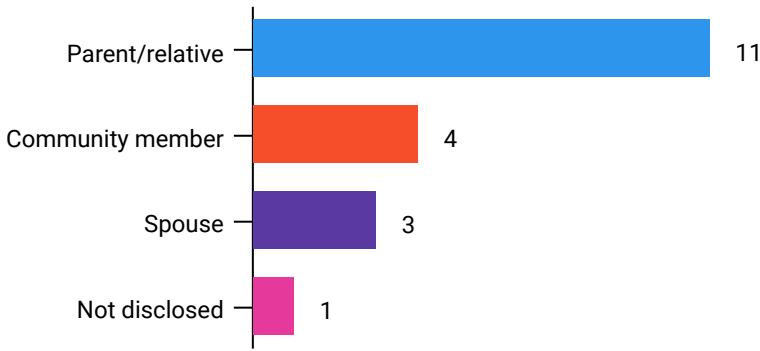


\* Information taken from the Ageing & Disability Commission data on reports received between 1 January 2020 - 31 December 2022 where the location of the adult identified in the report was known.

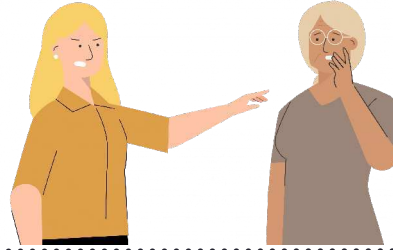
^A paid worker is defined as a formal paid support worker, for example an NDIS support worker or CHSP provider.

~ People who identify as Aboriginal or Torres Strait Islander and who are over 18 with disability, or an older person 50+

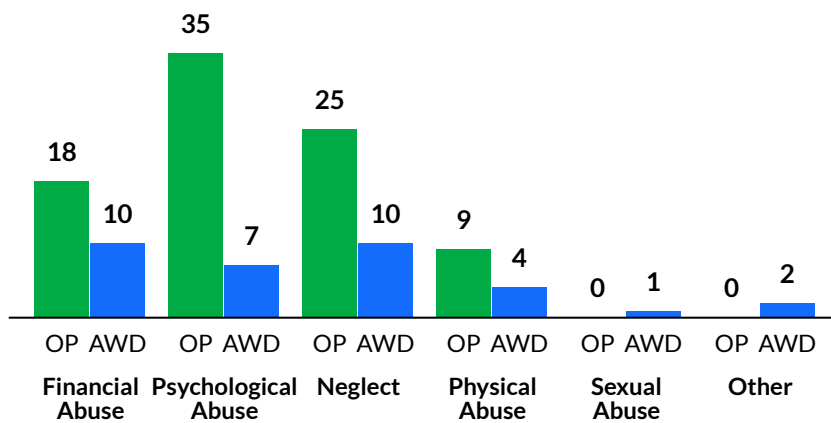
Reports about adults with disability **most commonly involved a relative or parent\*** as the subject of allegation



**59%** of reports about older people involved family members, **mainly adult children** followed by a spouse or partner,\* as the subject of allegation



The most commonly reported types of abuse towards **older people (OP)** were **verbal abuse, failure to meet support needs and restricting contact with family\***



The most commonly reported types of abuse towards **adults with disability (AWD)** were **financial exploitation, failure to meet support needs and verbal abuse\***

## What else do we know about the Bathurst community?

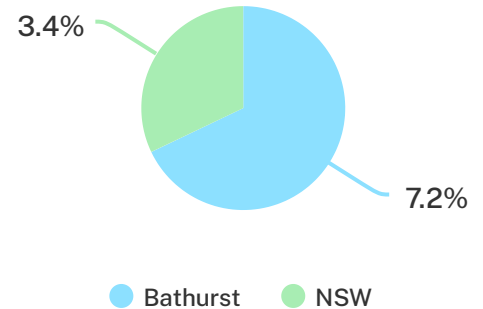
**18%**

of the population are over the age of 65.



**7.2%**

of the population identified as Aboriginal or Torres Strait Islander (ATSI)



**69%**

of all households are family households **28%** are single person households and **3%** are group households<sup>2</sup>

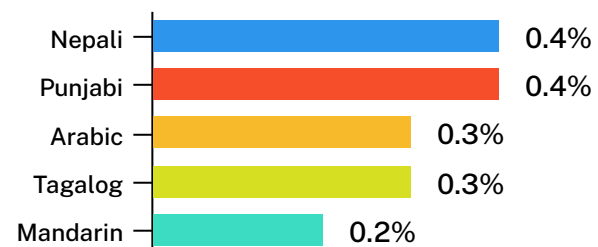


**7%**

of households speak a language other than English<sup>2</sup>



**Nepali and Punjabi** are common languages other than English spoken at home<sup>2</sup>



<sup>1</sup> The ADC classifies abuse into 5 broad categories, with a list of signs to indicate the type of alleged abuse reported.

<sup>2</sup> 2021 Census data by LGA (QuickStats)

<sup>2</sup> 2021 Census QuickStats, where group household refers to unrelated flatmate or co-tenancy arrangements.